

Application

General Food

(Instant Food, Cookie/Bread, Kimchi, Vegetable, Tofu and etc.)



Meat

(Frozen/Refrigerated Meat, Other processed Meat and etc.)



Sea Food

(Frozen/Refrigerated Sea Food, Dried Fish and etc.)



Pharmaceutical Industry

(Tablet/Capsule, Granules, Powder and etc.)



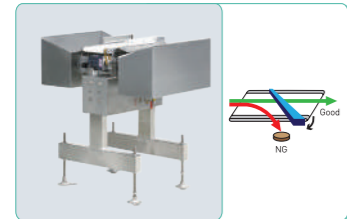
General Industry (Rubber, Timber, Plastic, Chemical Resin, Raw Material Recycling and etc.)



Auto Rejectors Available as option

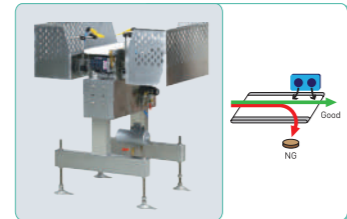
Flip Bar

For small sized (100~250mm) and light weighted (up to 6.0 kg) products
For relatively high-thickness products



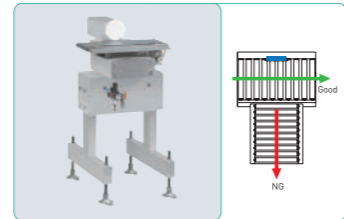
Air Blast

For small and light weighted (Max. 0.6 kg) products moving in a high speed



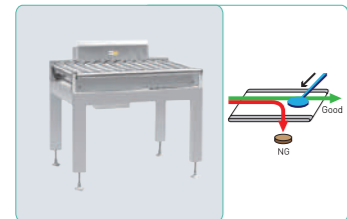
Pusher on Belt

For relatively light weighted (Max 0.6 kg) products



Puhsrer on Roller

For relatively heavy weighted (Max 30.0 kg) products contained in a box



Drop Belt

For relatively light weighted (Max. 6.0 kg) and low-thickness products in a limited site



Series
NWC 490

NOWSYSTEMS (No. M100005-450C) Printed in Korea. Designed by www.designline.co.kr

AUTO CHECK WEIGHER

NWC 490 Series



- Full Color Touch Screen (10 inch TFT LCD)
- Providing 6 Different Types of Screens
- Auto Zero Tracking Function
- Self-Diagnosis Function
- Built-in Auto Data Double Back-Up Function
- Built-in Temperature Change and Noise Compensation Circuit
- Auto Speed Variation Function
- Auto Product Length Measuring Function
- Two Kinds Speeds Operating Function
- Auto Speed Control & Calibration Function
- Discretionary Weighing Range Setting Function
- Enhanced Data Totalizing and Data Backup Function
- Easy Data Analysis and Aggregation Function
- Weight Setting Value Storage (999 cases) and Recall Function
- USB Memory Saving and Software Update Function
- External Devices Control & Feedback Function
- Material of Frame SUS304
- Statistics and Printing Function (Optional)
- Metal Detecting Function (Optional)

NWC490 Series check weigher has been developed to satisfy the strictest production requirements, providing ease of operation, flexibility, hygiene, high-speed processing and optimum accuracy.

Full color touch screen (10 inch TFT LCD) is easy to see and offers a simple user-friendly menus together with various convenient functions. The unique modular design allows easy on-site adjustment for installation and remarkable accessibility for maintenance which enables minimal downtime.



AUTO CHECK WEIGHER NWC 490 Series



Full Color Touch Screen
(10 inch 16.7 Color TFT LCD Screen & Resolution: 800 x 480)

Providing 6 Different Types of Screens

Auto Zero Tracking Function

- Auto zero adjustment can be performed by the operator before start-up or product changeover.
- Also, automatic zero adjustment is programmed to occur at regular intervals during production

Self-Diagnosis Function

- Self-diagnosis automatically checks various function including the stability of the machine, zero tracking status, printer operating status, metal checking status and check weigher error status

Built-in Auto Data Double BackUp Function when black out occurs

Built-in Temperature Change and Noise Compensation Circuit

Auto Speed Variation Function depending on its input Processing Quantity

Auto Product Length Measuring Function when passing the product

Two Kinds Speeds Operating Function by Inverter

Auto Speed Control & Calibration Function

Discretionary Weighing Range Setting Function by absolute and deviation weighing method

Enhanced Data Totalizing and Data Backup Function

Easy Data Analysis and Aggregation Function

Weight Setting Value Storage (999 cases) and Recall Function

USB Memory Saving and Software Update Function

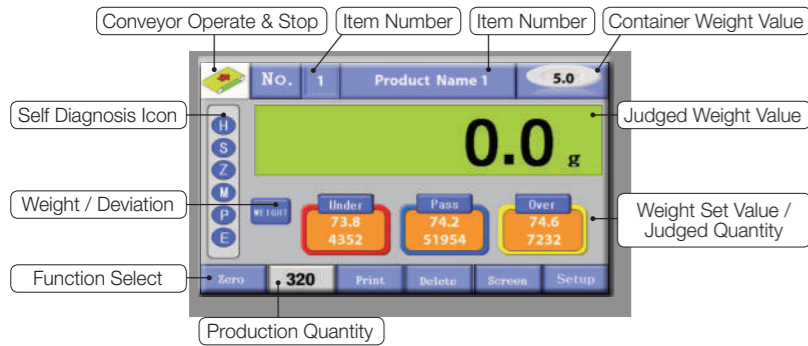
External Devices Control & Feedback Function by Serial Communication(RS232C & 485) & Dry Contact Signal

Statistics and Printing Function (Optional)

Material of Frame SUS304

Metal Detecting Function (Optional)

Basic Display Configuration



Changable Screen Type by Simply Swiping the Display



Noticeable Display Color Change depending on Weight Result



Specification

Model	NWC490-30	NWC490-30S	NWC490-60	NWC490-60S	NWC490-120	NWC490-150	NWC490-300	NWC490-600	NWC490-2000	NWC490-3000	NWC490-4000	NWC490-6000	
Width (mm)	Belt (BW)	100	150	150	180	220	100	300	360	480	580	680	
	Weigher (CW)	600	600	600	600	600	600	600	640	640	600	600	
Length (mm)	In-Feed Conveyor (CL1)	260/320/380	400	260/320/380/440	260/320/380/440	350	450/550	550/650					
	Weighing Conveyor (CL2)	260/320/380	350	260/320/380/440	260/320/380/440	250	450/550	550/650	700/900/1,100/1,300	900/1,100/1,300	1,100/1,300	1,100/1,300	
	Rejecting Conveyor (CL3)	524/644/764	350/350	524/644/764/884	524/644/764/884	350/350	450	884/1,104	1,104/1,304	690/914	914/1100	1100/1300	
Min. Conveyor Height (mm)	600 ±50, 100	750 ±50	600 ±50, 100	600 ±50, 100	750 ±50	750 ±50	600 ±50, 100	600 ±50, 100	650 ±50, 100	650 ±50, 100	650 ±50, 100	650 ±50, 100	
Weighing Capacity (gram)	300	600	600	600	1,200	200	3,000	6,000	20,000	30,000	40,000	60,000	
Weighing Range (gram)	3 ~ 300	6 ~ 600	6 ~ 600	6 ~ 600	12 ~ 1,200	2 ~ 200	30 ~ 3,000	60 ~ 6,000	200 ~ 20,000	300 ~ 30,000	400 ~ 40,000	600 ~ 60,000	
ptimum Accuracy (gram)	± 0.15	± 0.2	± 0.3	± 0.3	± 0.2	± 0.45	± 1.5	± 3.0	± 10	± 10g	± 20	± 40	
Scale interval (gram)	0.05	0.1	0.1	0.1	0.1	0.05	0.5	1.0	5.0	5.0	10	20	
Max. Weighing Speed / Min. Belt Speed / Min. Zero Adjustment	250 ea 10 ~ 84 m	120 ea 10 ~ 42 m	220 ea 10 ~ 74 m	220 ea 10 ~ 74 m	120 ea 10 ~ 54 m	200 ea 10 ~ 50 m	100 ea 10 ~ 58 m	75 ea 10 ~ 53 m	60 ea 10 ~ 54 m	45 ea 10 ~ 52 m	30 ea 10 ~ 49 m	20 ea 10 ~ 33 m	
Product Dimension (mm)	Width	30 ~ 100	30 ~ 100 mm	30 ~ 150 mm	30 ~ 150 mm	30 ~ 220 mm	30 ~ 300 mm	30 ~ 360 mm	30 ~ 380 mm	30 ~ 480 mm	30 ~ 580	30 ~ 680	
	Length	30 ~ 200	30 ~ 200 mm	30 ~ 260 mm	30 ~ 260 mm	30 ~ 450 mm	30 ~ 250 mm	30 ~ 450 mm	30 ~ 700 mm	30 ~ 900 mm	30 ~ 1100	30 ~ 1100	
	Height	10 ~ 100	10 ~ 100 mm	10 ~ 150 mm	10 ~ 150 mm	10 ~ 220 mm	10 ~ 100 mm	10 ~ 300 mm	10 ~ 360 mm	10 ~ 480 mm	10 ~ 580	10 ~ 680	
Outputs	Relay (5A) / 1A1B 2EA, DC24V SOL, AC220V 0.2A						Relay (5A) / 1A1B 2EA, DC24V SOL, AC220V 0.2A						
Power Supply	Single Phase (110 to 220V) & Three Phase (220 to 380V and etc.), Free Cycle (50/60Hz) & Fuse (3A)						Single Phase (110 to 220V) & Three Phase (220 to 380V and etc.), Free Cycle (50/60Hz) & Fuse (3A)						
Operating Temperature	0°C to 50°C (advised to use the machine under the normal temperature)						0°C to 50°C (advised to use the machine under the normal temperature)						
Rejectors Available	Flip Bar Slide Carrier Air Blast Pusher on Belt Drop Belt	Flip Bar Slide Carrier Air Blast Pusher on Belt Drop Belt	Flip Bar Slide Carrier Air Blast Pusher on Belt Pusher on Roller Drop Belt	Flip Bar Slide Carrier Air Blast Pusher on Belt Pusher on Roller Drop Belt	Flip Bar Slide Carrier Air Blast Pusher on Belt Pusher on Roller Drop Belt	Flip Bar Air Blast Pusher on Belt Pusher on Roller Drop Belt	Flip Bar Air Blast Pusher on Belt Pusher on Roller Drop Belt	Flip Bar Air Blast Pusher on Belt Pusher on Roller Drop Belt	Flip Bar Pusher on Belt Pusher on Roller Drop Belt	Pusher on Belt Pusher on Roller	Pusher on Belt Pusher on Roller	Pusher on Roller	Pusher on Roller

*Maximum Accuracy may change depending on the product conditions.

**Maximum Weighing Speed may change depending on the product dimension and conveyor speed.

Enhanced Total Screen and Data Backup Function

Labels: Displaying Measured values and judged values, Under weight limit setting value line, Showing quantity for each grade and percentage in comparison with total quantity, Weight scope included in a bar graph, Over weight limit setting value line, Deleting data for a currently weighted item number but its data is saved into the internal memory, Contents in vertical line of bar graph is magnified or decreased by two times in comparison with minimum scale accuracy, Printing out summary data by an external printer to be installed as option, As of last backup time, every aggregated data is saved into SD or USB memory.

Strengthened Item List

- Possible to line up and product names and choose their numbers from previously inputted 999 pieces of item list.



External Output Printer Setup Function (Optional)

Printer

- Preset parameters and various performance data can be printed by attaching an optional printer to the control unit.

